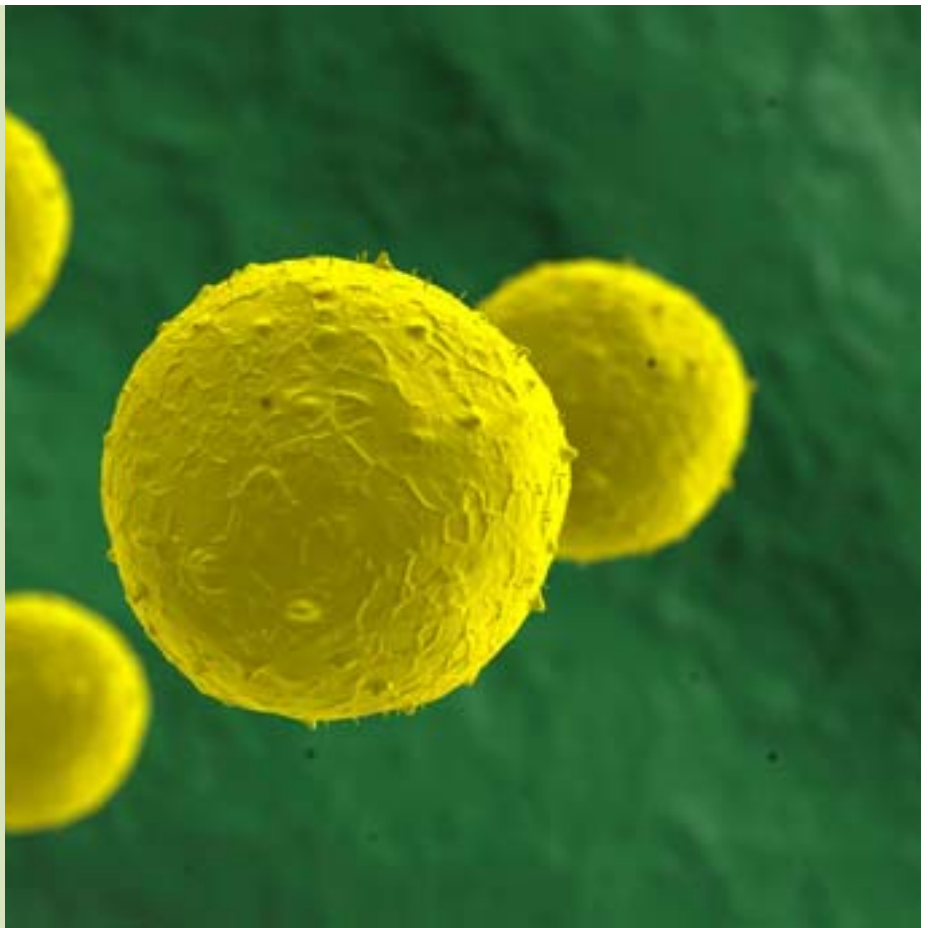


REDMO

ANNUAL REPORT 2010



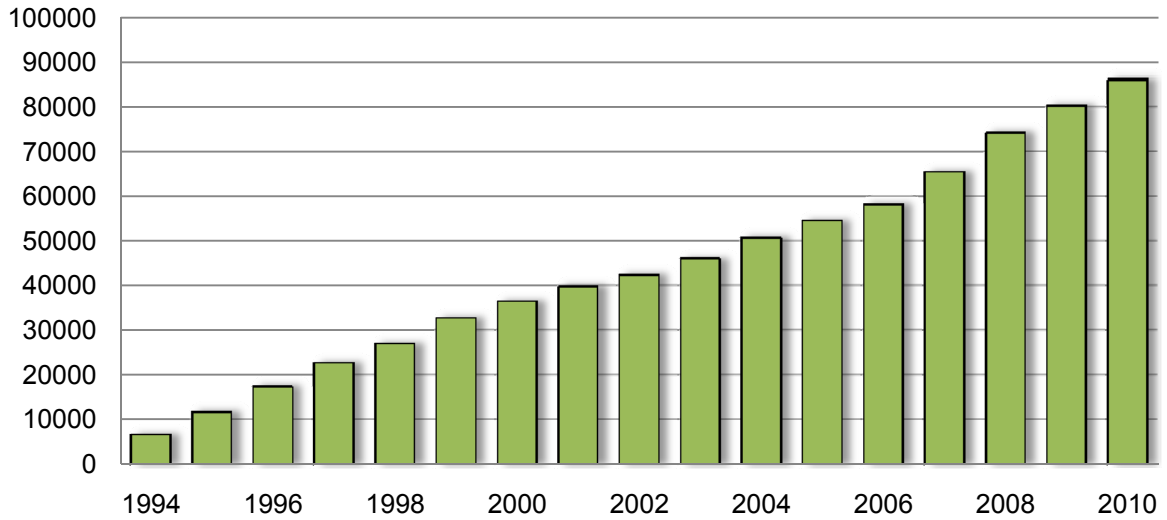
JOSÉ CARRERAS
LEUKAEMIA
FOUNDATION

REDMO
Bone marrow
donor registry

VOLUNTEER DONORS

Available typed donors on December 31st 2010

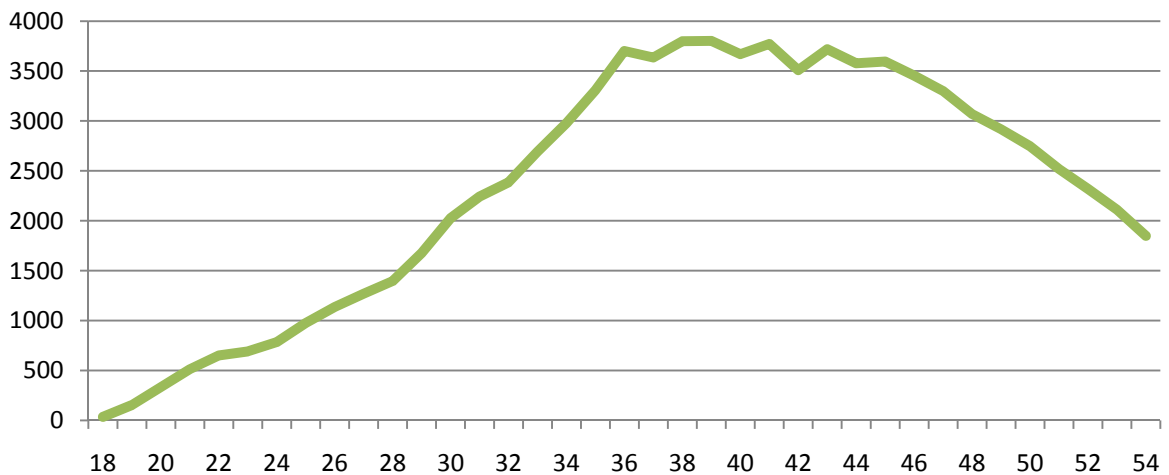
86 361 ▲ 8%



Registered donors

Donors typed in 2010: 8 175

Current age of available typed donors



Mean donor age: 42.6 years
Standard deviation: +/- 9.8

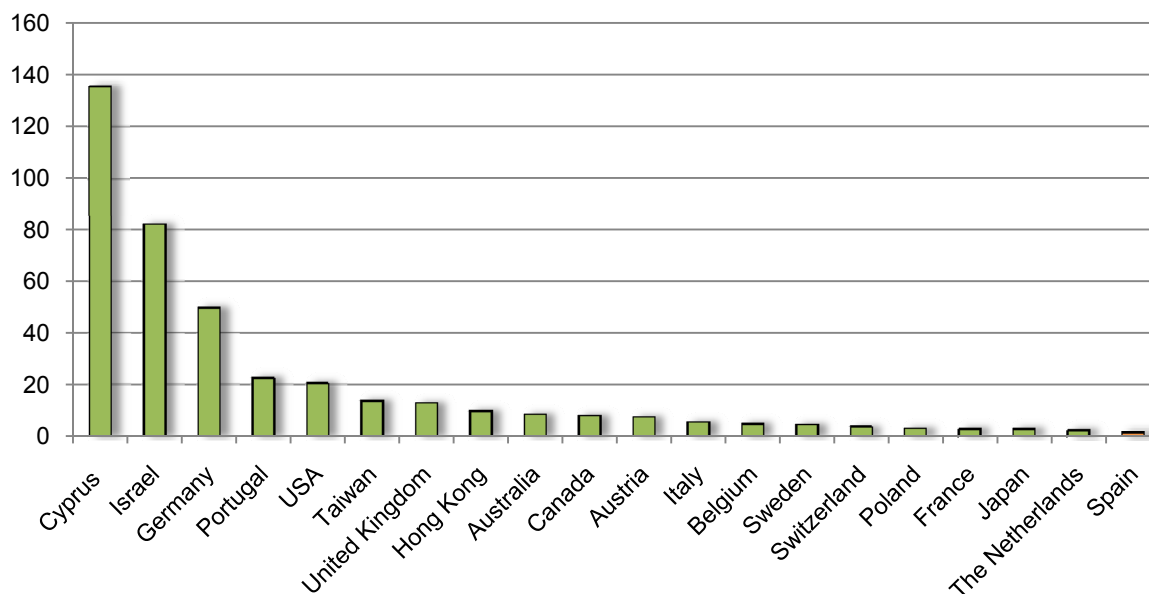
Median age of donors: 42.2 years

VOLUNTEER DONORS

Donors per Autonomous Community			
Autonomy	Typed 2010	Total Actives	x 100 000 inh
Andalucía	1 545	14 001	167.25
Aragón	29	1 105	82.03
Asturias	91	2 156	198.83
Baleares (Islas)	157	1 612	145.74
Canarias	710	4 791	226.15
Cantabria	63	537	90.67
Castilla y León	528	5 644	220.51
Castilla – La Mancha	206	2 415	115.09
Catalunya	1 068	14 189	188.89
Comunidad Valenciana	1 821	9 381	183.52
Extremadura	145	3 154	284.85
Galicia	172	2 122	75.85
Madrid (Comunidad de)	649	8 982	139.07
Murcia (Región de)	279	5 944	406.57
Navarra (Comunidad Foral de)	471	5 677	891.31
País Vasco	144	3 770	173.07
Rioja (La)	80	600	186.10
Ciudad Autónoma de Ceuta	14	108	134.03
Ciudad Autónoma de Melilla	1	40	52.61
Andorra	2	133	158.18
Total	8 175	86 361	176.97

VOLUNTEER DONORS

Registered volunteer donors per 1 000 inhabitants



Donors cancelled during 2010

2 145

Donors cancellation reasons

Over 55 years	1 840
Disease	94
Untraceable	88
Voluntary withdrawal	46
Effective peripheral blood donation	32
Death	16
Ethical	15
Transferred to other registries	8
Other reasons	6

VOLUNTEER DONORS

Effective donations of haematopoietic stem cells during 2010	39
--	----

Per product

Bone Marrow	6 (16%)
Periphera blood stem cells	32 (84%)
Lymphocytes	1

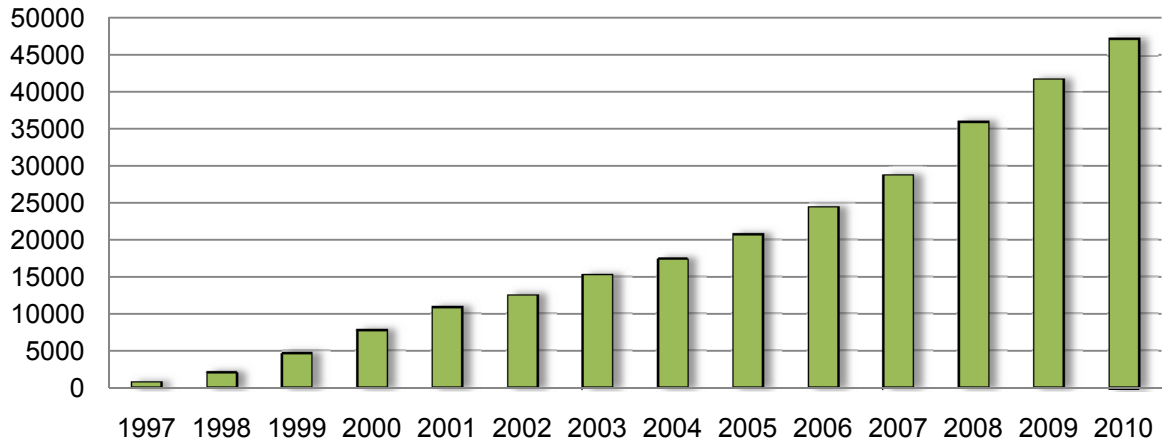
Collection Centres BM / PBSC / DLI

Hospital	BM	PBSC	DLI	Total
Hospital Virgen de la Arrixaca	0	3	0	3
Hospital Gregorio Marañón	0	2	0	2
Hospital Clínic de Barcelona	1	2	0	3
Centre de Transfusió i Banc de Teixits	0	4	0	4
Hospital de Donostia	1	3	0	4
Hospital Carlos Haya	1	1	0	2
Hospital Clínico de Salamanca	0	1	0	1
Hospital de la Princesa	1	3	1	5
Hospital Dr. Negrín	1	5	0	6
Fundación Jiménez Díaz	0	1	0	1
Hospital Son Espases	0	1	0	1
Hospital Puerta de Hierro	0	1	0	1
Hospital Ramón y Cajal	1	2	0	3
Hospital Central de Asturias	0	1	0	1
Complejo Hospitalario Univ. A Coruña	0	1	0	1
Hospital La Paz	0	1	0	1
Total	6	32	1	39

UMBILICAL CORD BLOOD

Available cord blood units on December 2010

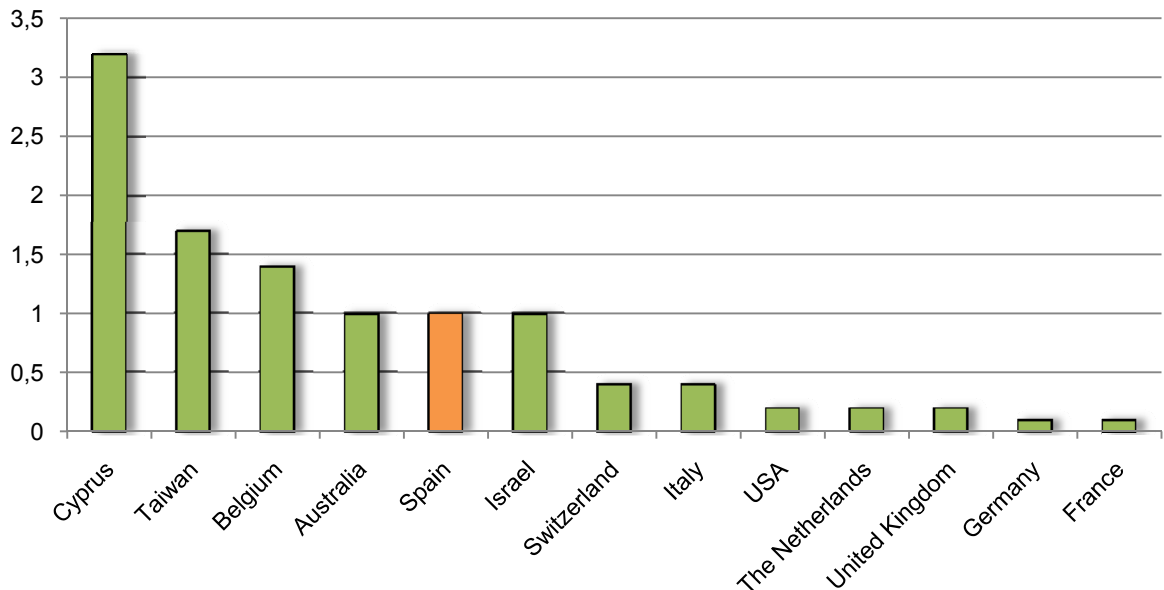
47 324 ▲ 13%



■ Available cord blood units

Cord Blood Units 2010: 5 767

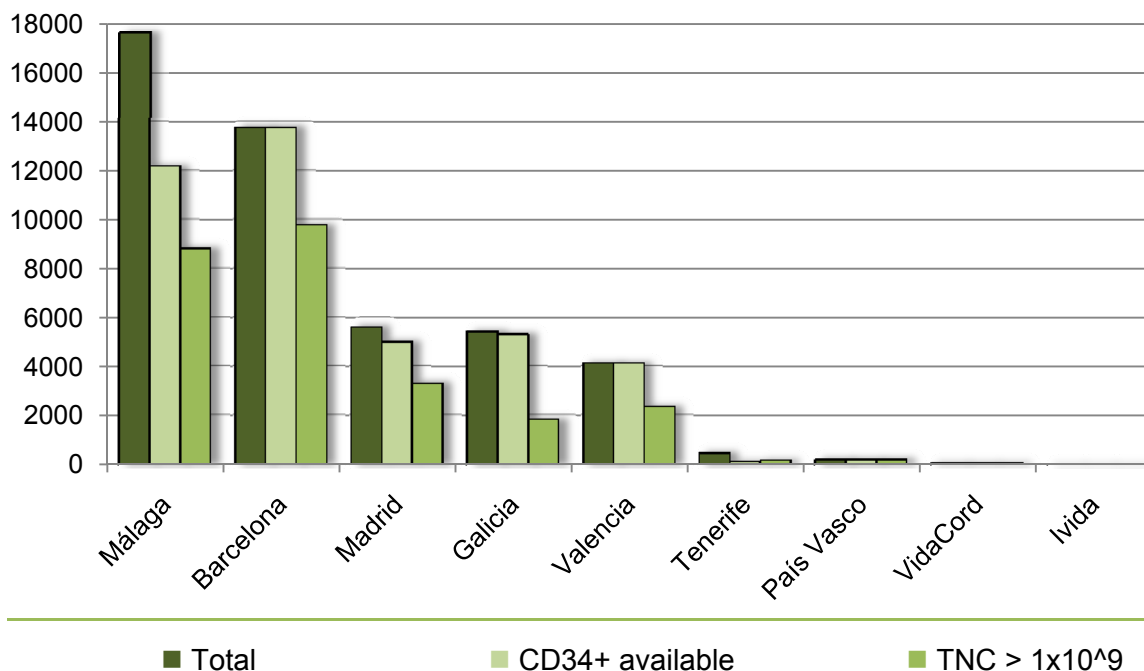
Available Cord Blood Units per 1 000 inhabitants



UMBILICAL CORD BLOOD

Cord Blood Units – Cord Blood Banks distribution

Bank	Number	TNC > 1 x10 ⁹	CD34+ available
Málaga <i>Castilla – La Mancha: 598; Murcia: 1</i>	17 672	50%	69%
Barcelona <i>Navarra: 764; Extremadura: 303; Aragón: 322; Balears: 204; Cantabria: 94</i>	13 779	71%	100%
Madrid <i>La Rioja: 27</i>	5 617	59%	89%
Galicia <i>Castilla y León: 162; Asturias: 18</i>	5 434	34%	98%
Valencia	4 140	57%	100%
Tenerife	455	34%	26%
País Vasco	186	100%	100%
Vidacord	39	33 %	100%
Ivida	2	50%	100%



UMBILICAL CORD BLOOD

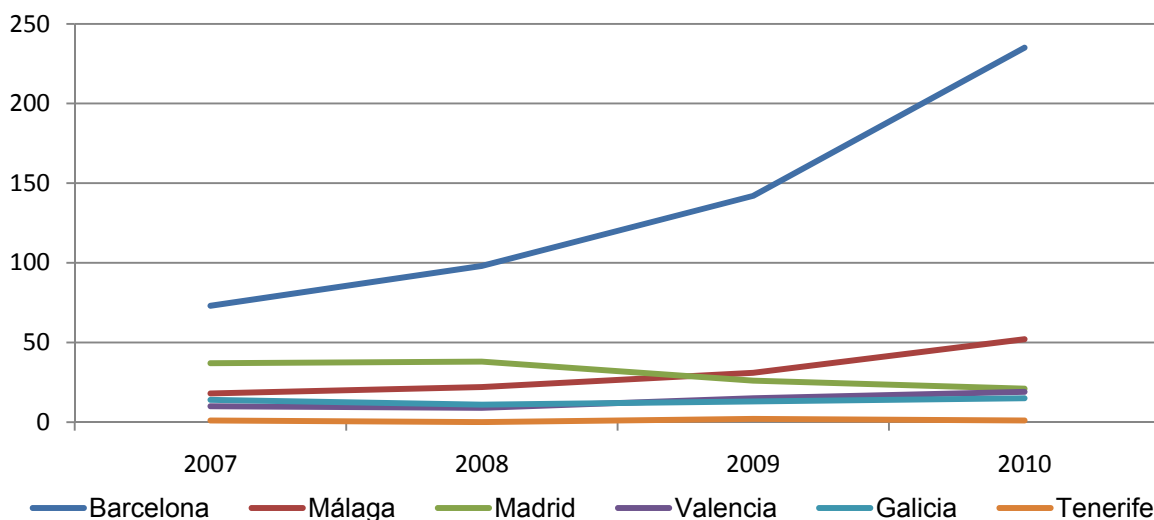
Spanish Cord Blood Units provided during 2010

343

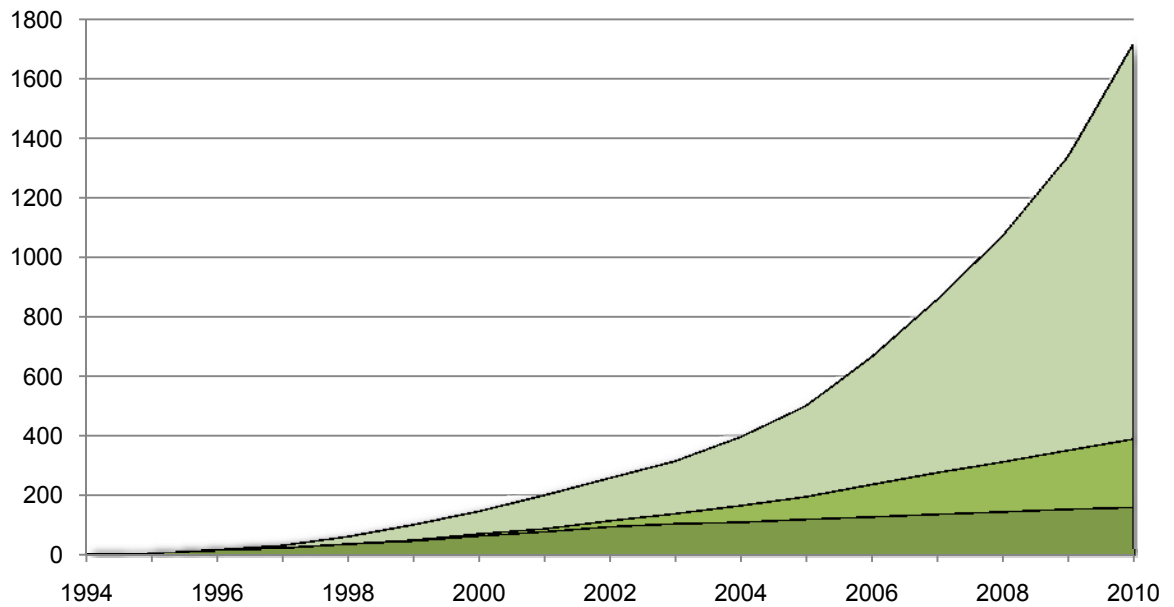
By originating banks

Originating Bank	National patients	Foreign patients	Total
Barcelona	60 (41)	175 (101)	235 (142)
Málaga	7 (3)	45 (28)	52 (31)
Madrid	2 (9)	19 (17)	21 (26)
Valencia	3 (3)	16 (12)	19 (15)
Galicia	0 (0)	15 (13)	15 (13)
Tenerife	0 (0)	1 (2)	1(2)
País Vasco	0	0	0
Vidacord	0	0	0
Ivida	0	0	0
Total	72	271	343

Cord blood units provided by cord blood bank



Cumulative incidence of spanish donations



Total donations*: 1 721

■ CBU (n= 1 332) [343]

■ PBSC (n= 230) [32]

■ BM (n= 159) [6]

* DLI donations not included
[2010 total activity]

NATIONAL PATIENTS

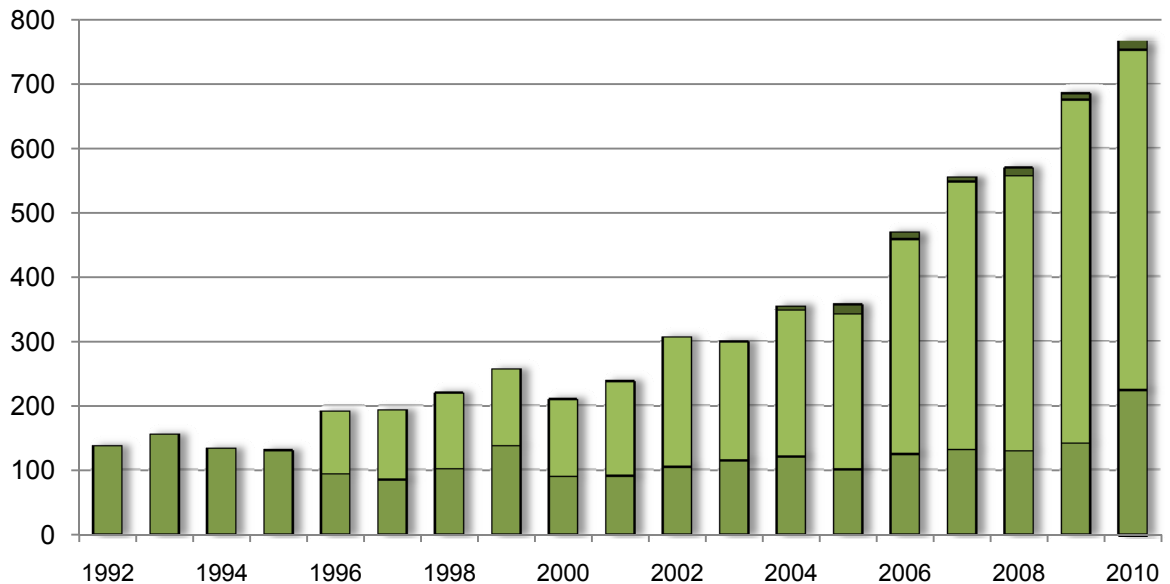
A. Searches started

Searches started during 2010

768 ▲12%

Type of search	
Bone marrow / Peripheral blood	224 (29%)
Cord blood	13 (2%)
Bone marrow / Peripheral blood and Cord blood	531 (69%)

Search evolution for national patients



Searches started 2010: 768

■ CBU (n= 13)

■ PBSC / BM + CBU (n= 531)

■ PBSC / BM (n= 224)

NATIONAL PATIENTS

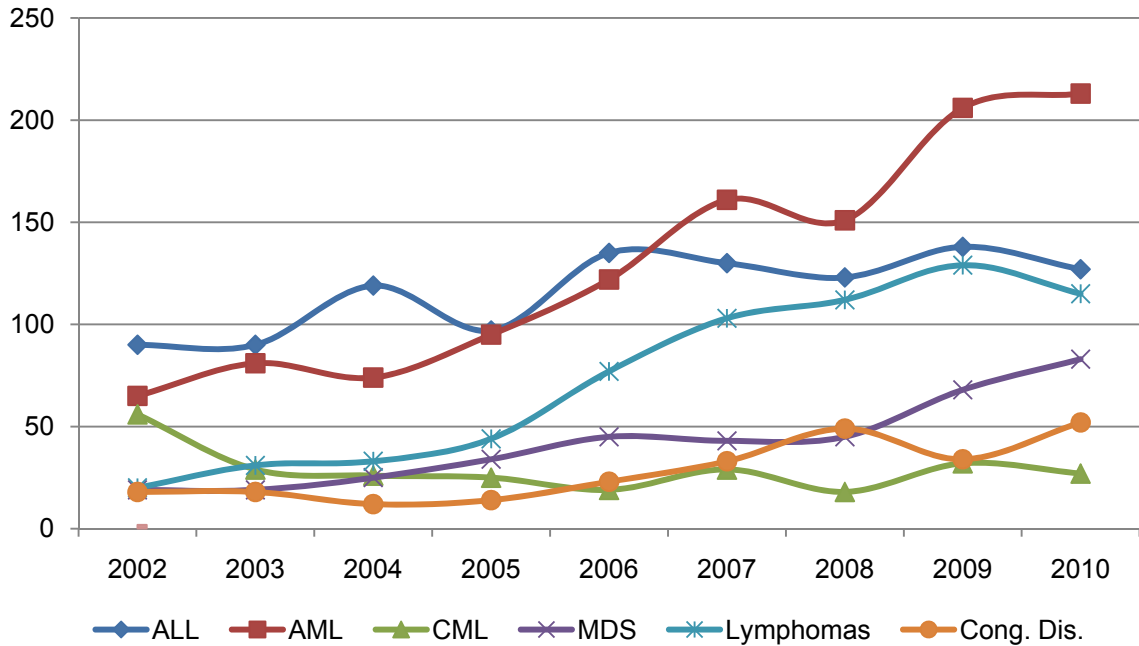
Searches started by community of residence of patient (n= 768)		
Autonomous Community	Number	x 100 000 inh
Andalucía	91	1.09
Aragón	10	0.74
Asturias	37	3.41
Baleares (Islas)	11	0.99
Canarias	21	0.99
Cantabria	24	4.05
Castilla y León	52	2.03
Castilla – La Mancha	15	0.71
Catalunya	163	2.17
Comunidad Valenciana	79	1.54
Extremadura	15	1.35
Galicia	53	1.89
Madrid (Comunidad de)	94	1.45
Murcia (Región de)	25	1.71
Navarra (Comunidad Foral de)	17	2.67
País Vasco	42	1.93
Rioja (La)	9	2.79
Ciudad Autónoma de Ceuta	1	1.24
Ciudad Autónoma de Melilla	0	0
<i>Foreign</i>	9	NA

NATIONAL PATIENTS

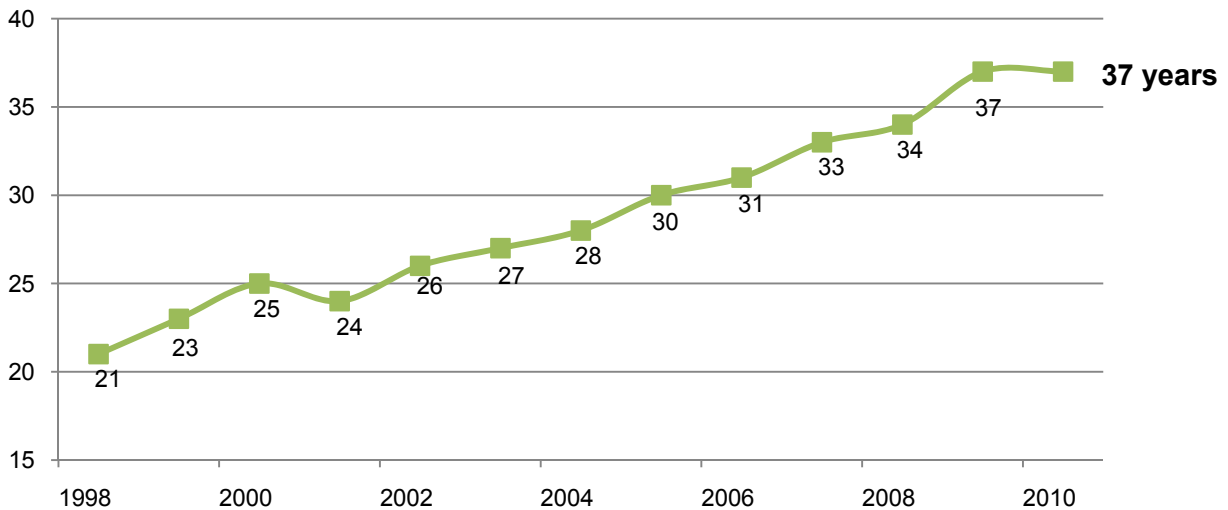
Searches started by diagnosis (n= 768)	
Acute Myeloblastic Leukaemia	213
Acute Lymphoblastic Leukaemia	127
Myelodysplastic disorders	83
Non-Hodgkin 'sLymphoma	68
Other leukaemias	51
Hodgkin's Lymphoma	47
Monoclonal gammopathy	44
Inherited erythrocytic abnormality	29
Severe aplastic anaemia	28
Chronic myeloid leukaemia	27
Other malignant disease	15
Inherited metabolic disease	13
Inherited Immune system disease	10
Histiocytosis	8
Other non malignant disease	5

NATIONAL PATIENTS

Evolution of searches by main diagnoses



Evolution of the mean age of searches



NATIONAL PATIENTS

CBU selections made by the REDMO Office during 2010	164
Active searches on January 1st 2010	251
Active searches on December 31st 2010	268
Cancelled searches during 2010	764

Cancellation reasons

Unrelated transplantation	404
National regulation (see detail*)	134
Death	124
Clinical Status	56
Related transplantation	12
Patient decision	12
Unrelated DLI infusion	9
Other (typing's change, other therapy, transfer to other registries)	8
Autologous transplant	5

* Details of the searches cancelled due to national regulations

Inactive searches for >1 year (without donor)	10
Inactive searches for >1 year (with donor)	77
Searches that have remained active 2 years	8
Searches that have remained active 1 year	39

NATIONAL PATIENTS

Inactive searches on December 31, 2010	203
Reason for inactive searches	
Suitable donor found	194
Selected cord blood unit (infusion pending)	9

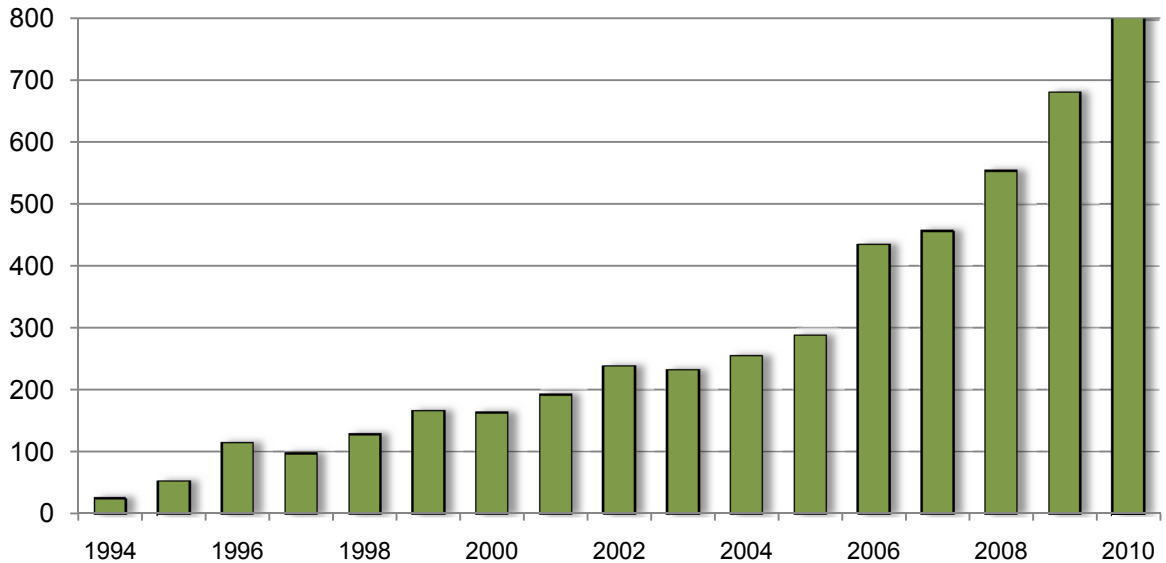
B. Localized donors

Patients for whom one or more donors have been located (BM / PBSC)	477 ▲ 10%
Donors located during 2010 (BM / PBSC)	806
Time to find the first BM / PBSC donor mean (days)	80 (SD: ± 94)
Time to find the first BM / PBSC donor median (days)	48

Search time for BM / PBSC donors in percentages	
Before 3 months	79.9
Between 3 and 6 months	10.9
Between 7 and 9 months	4.8
Between 10 and 12 months	1.7
More than 12 months	2.7

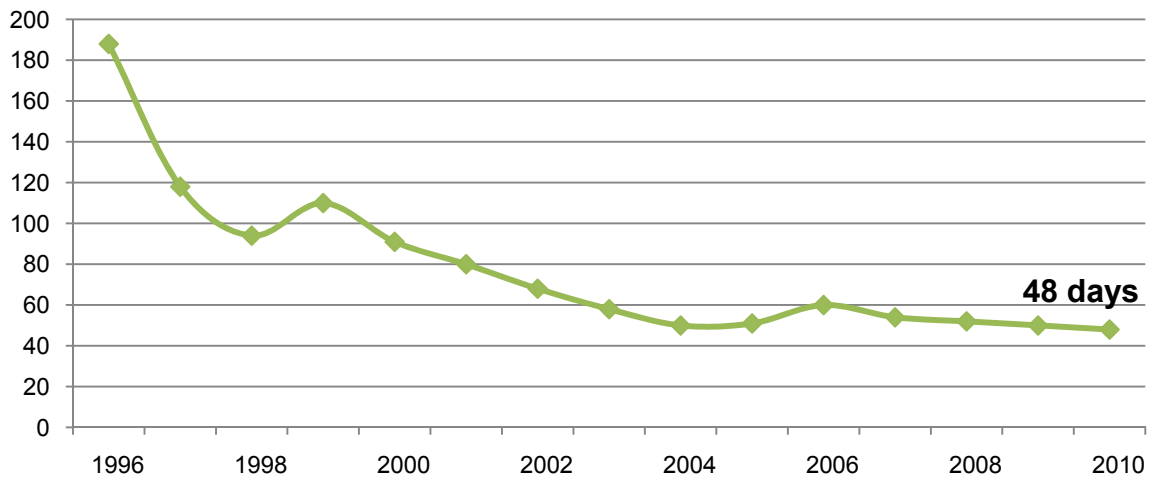
NATIONAL PATIENTS

Evolution of donors localized



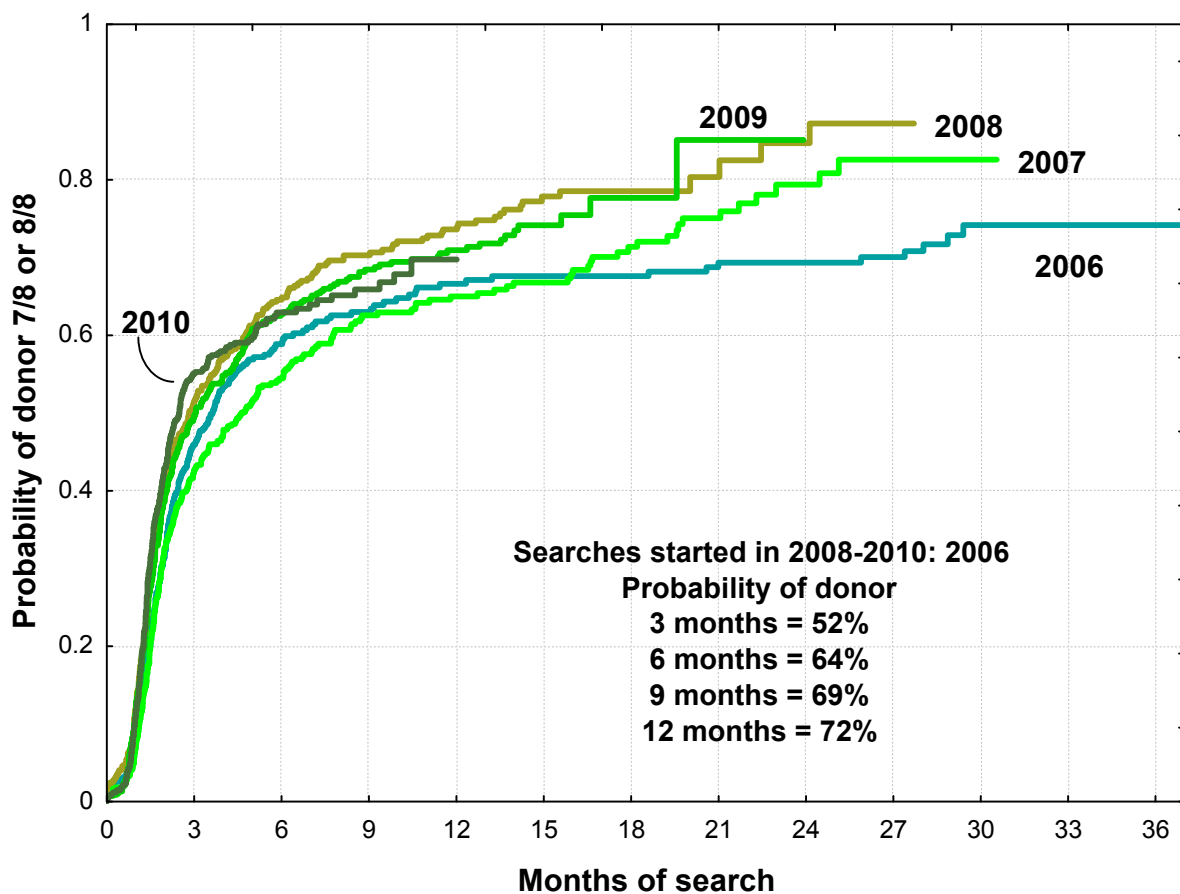
Donors found in 2010: 806

Median time to locate the first BM / PBSC donor



NATIONAL PATIENTS

Actuarial probability of locating a donor with 7/8 or 8/8 identities



NATIONAL PATIENTS

C. Transplants

Haematopoietic transplantions performed during 2010

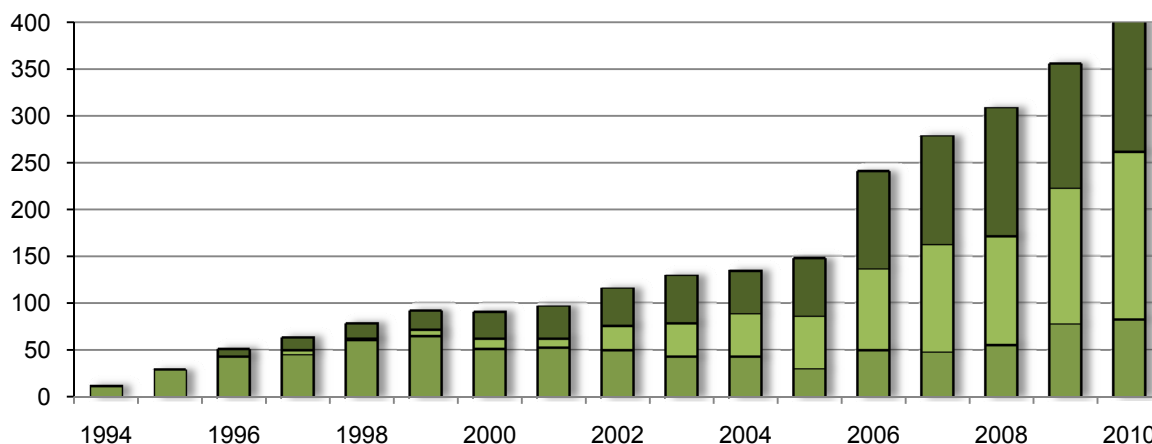
404 ▲ 13%

By product

Bone Marrow	83 (21%)
Peripheral blood setm cells	179 (44%)
Cord blood unit (<i>lymphocytes infusion</i>)	142* (35%) (9)

(*9 transplant performed with double cord)

Evolution of performed transplants



Transplant performed 2010: 404

■ CBU (n= 142)

■ PBSC (n= 179)

■ BM (n= 83)

NATIONAL PATIENTS

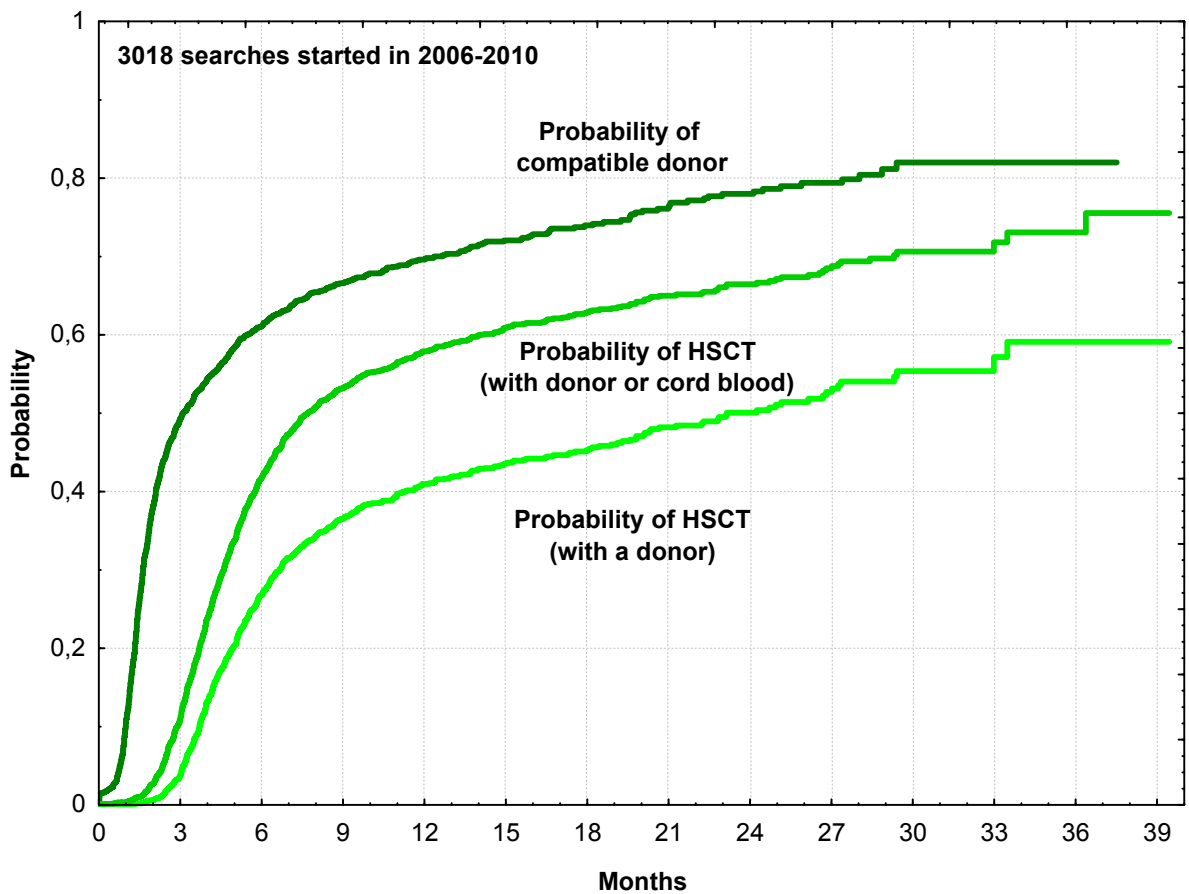
Transplant by country of origin BM / PBSC (n= 262)	
Germany	141
United States	67
United Kingdom	14
Spain	11
Portugal	8
France	6
Italy	5
Israel	2
Switzerland	2
Australia	1
Canada	1
Cyprus	1
Denmark	1
The Netherlands	1
Norway	1

Transplant by country of origin CBU* (n=142)	
Spain	73
United States	54
Germany	9
Australia	6
France	5
Switzerland	2
Italy	1
Sweden	1

(* 9 double cord transplantation)

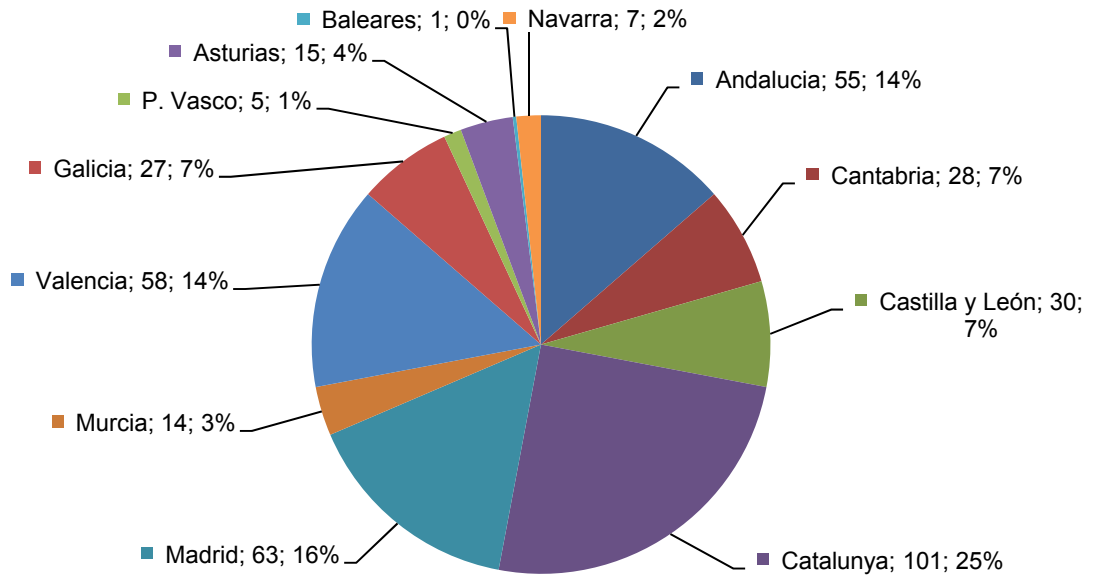
NATIONAL PATIENTS

Actuarial probability of matching donor and transplantation

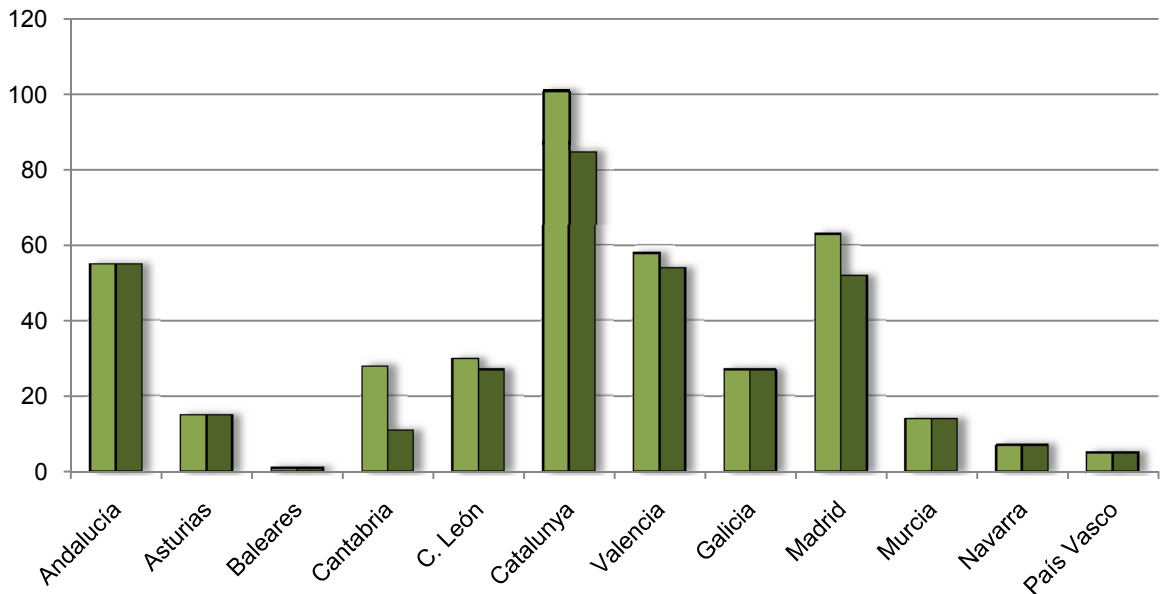


NATIONALPATIENTS

Transplants performed by Autonomous Community (2010)



Activity by Autonomous Community

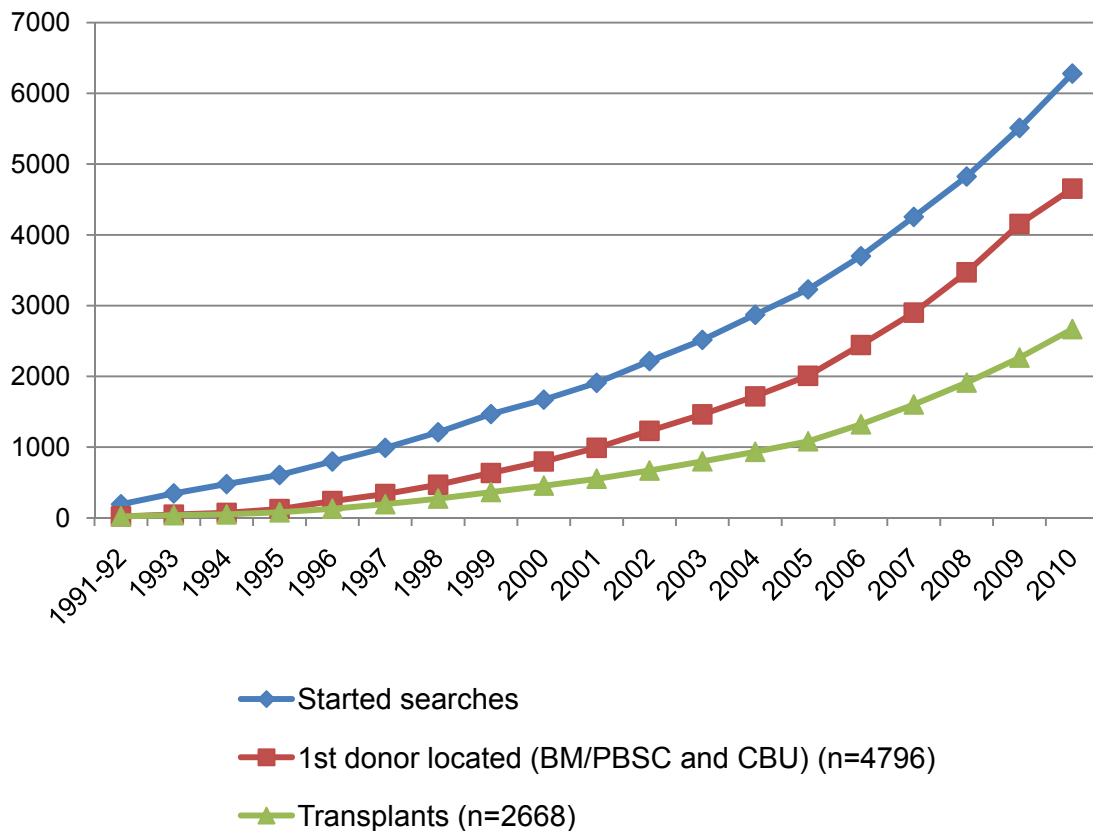


■ Total trasplants

■ Transplant from same community

NATIONAL PATIENTS

Summary REDMO activity (national patients)

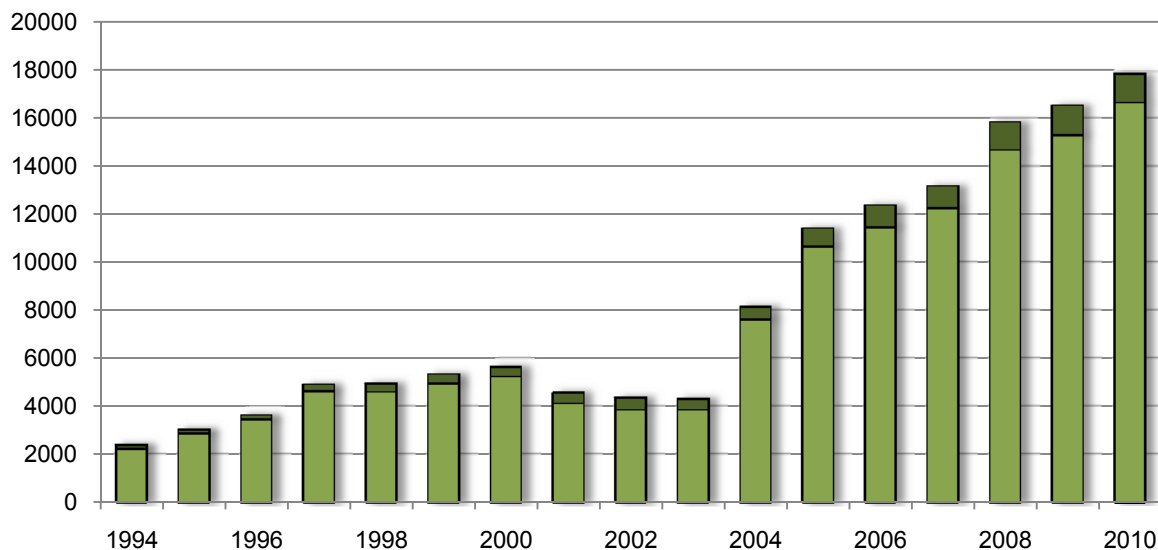


FOREIGN PATIENTS

Preliminary searches 16 654 ▲ 9%

Activated searches 1 230

Evolution of searches for foreign patients



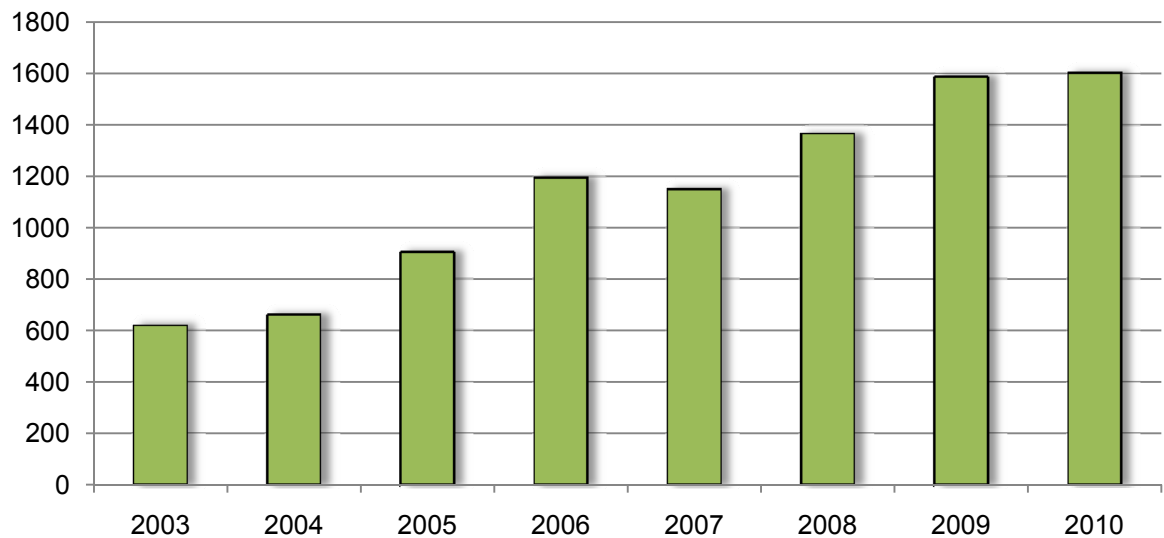
■ Preliminary Searches (n= 16 654)

■ Activated searches (n=1 230)

FOREIGN PATIENTS

Requested tests	2 026
Performed tests	1 605

Evolution of performed tests



FOREIGN PATIENTS

Haematopoietic stem cells transplant performed 2010	299
---	-----

Transplants by product	
Bone marrow	2 (1%)
Peripheral blood stem cells	26 (9%)
Umbilical cord blood* (<i>lymphocyte infusion</i>)	271 (90%) (1)

* This corresponds to UCB units shipped. There is not confirmation of infusion in all cases.

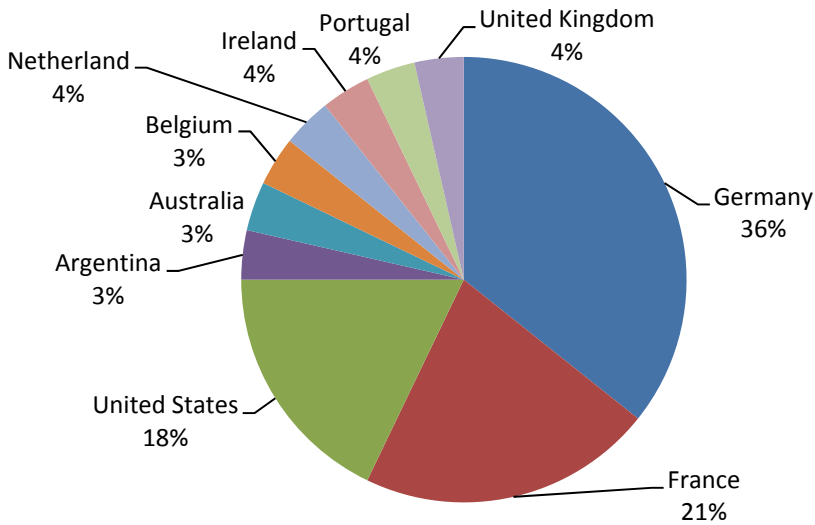
Transplant by country of destination BM / PBSC (n= 28)	
Germany	10
France	6
United States	5
Argentina	1
Australia	1
Belgium	1
The Netherlands	1
Ireland	1
Portugal	1
United Kingdom	1

FOREIGN PATIENTS

UCB shipments by country of destination (n= 271)	
France	67
United States	63
United Kingdom	34
Italy	21
Israel	11
The Netherlands	10
Germany	9
Colombia	8
Greece	8
Australia	5
Turkey	5
Argentina	4
Canada	3
Denmark	3
Hungary	3
Mexico	3
Belgium	2
Cuba	2
Portugal	2
Switzerland	2
Austria	1
Chile	1
Finland	1
Poland	1
Sweden	1
Uruguay	1

FOREIGN PATIENTS

Transplant by country of destination BM / PBSC (n= 28)



CBU shipments by country of destination (n= 271)

